

PRODUCT SHEET  
 REV 2.1 - EN202003  
**SPRING TOYS  
 DOUBLE SHAPE**

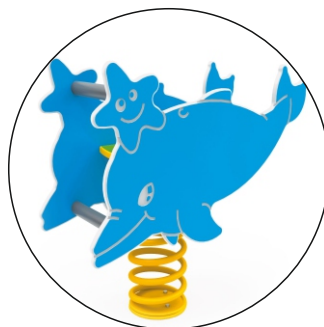


ORGANIZATION WITH QUALITY MANAGEMENT SYSTEM  
 ISO 9001:2015 CERTIFIED by  
 EuCI European Certification Institute LTD  
 Certificate N.: GOTT253201932

ORGANIZATION WITH ENVIRONMENTAL MANAGEMENT SYSTEM  
 ISO 14001:2015 CERTIFIED by  
 EuCI European Certification Institute LTD  
 Certificate N.: GOTT2532E1904



868 HOPPER



820 KEO



853 KIOKI



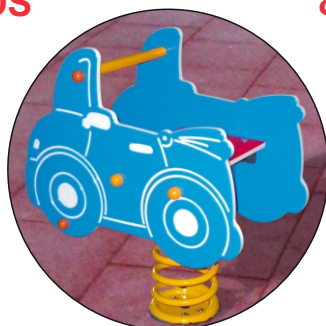
852 COSMOS



851 KIBA



830 ZIB

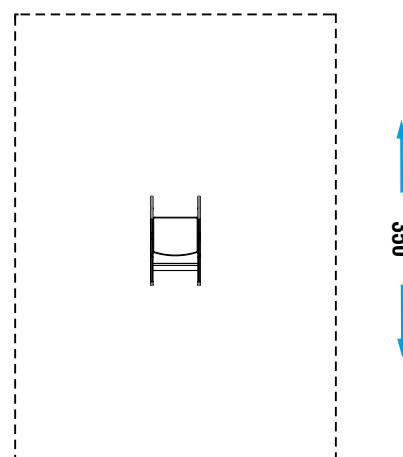


811 BERTINO

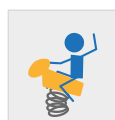
<b>CATALOG COLLECTION</b>	PLAYGROUND ESSENTIALS
<b>DIMENSIONS (L x W x H) in cm</b>	100 x 30 x 85
<b>MAXIMUM CFH</b>	-
<b>IMPACT ATTENUATING SURFACE</b>	min. 8,75 m <sup>2</sup> - MAX 8,75 m <sup>2</sup>
<b>SUGGESTED AGE OF USE</b>	3+
<b>COMPOSITION</b>	19mm thick HDPE sheet shapes with engravings, with HDPE seat and metal tubular handle and footrest. Powder coated metal sheet central support. Oscillating on a central Ø200mm crushing free steel spring.

SECURITY AREA

← 250 →



ROCKING



Make a proper security surface according to CFH. Periodic maintenance is mandatory, following manual supplied to customer.