






# PRODUCT SHEET

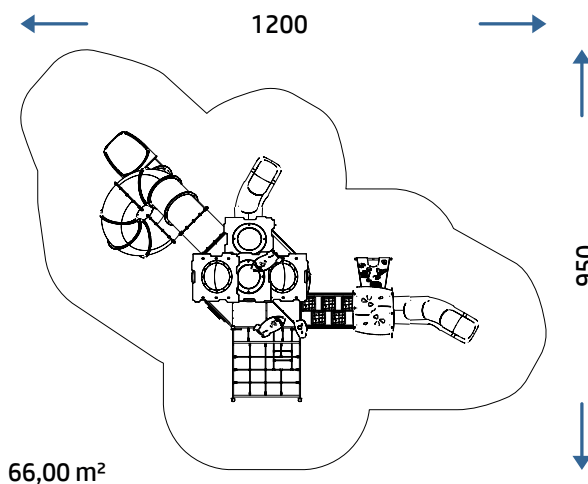
# 660 OTTAVIA

REV 0.0 - IT202509



## SECURITY AREA

|  | CATALOG COLLECTION            | PARTY LINE           |
|--|-------------------------------|----------------------|
|  | <b>DIMENSIONS (L X W X H)</b> | 590 x 830 x 585 cm   |
|  | <b>IMPACT AREA</b>            | 62,50 m <sup>2</sup> |
|  | <b>MAXIMUM CFH</b>            | 190 cm               |
|  | <b>SUGGESTED AGE OF USE</b>   | 5+                   |
|  | <b>NUMBER OF USERS</b>        | 35                   |



# PRODUCT SHEET

# 660 OTTAVIA

REV 0.0 - IT202509

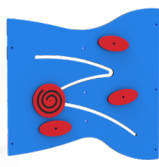
## COMPOSITION

- n° 17 70x70 mm octagonal section aluminum structural posts
- n° 15 recycled anti-slip HDPE decks
- n° 4 HDPE sheet roofs
- n° 1 gable roof in HDPE sheet
- n° 4 open metal guard panels
- n° 4 closed metal guard panels
- n° 3 HDPE sheet guard panels
- n° 1 HDPE sheet and metal guard panels
- n° 3 roto-molded PTE guard panels
- n° 1 «GOBBE» bridge
- n° 6 HDPE sheet climbings
- n° 1 inclined HDPE sheet climbing
- n° 1 shaped net frame
- n° 2 HDPE sheet thrust bearing
- n° 1 roto-molded PTE modular slide (H90)
- n° 1 roto-molded PTE modular slide (H150)
- n° 1 roto-molded PTE tube modular slide (H270)
- HDPE sheet decorations

## PLAY PANELS



LUDIC PLAY  
PANEL X1



LUDIC PLAY  
PANEL X1

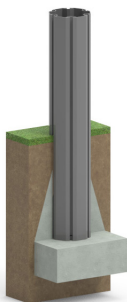


LUDIC PLAY  
PANEL X1

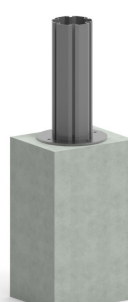


LUDIC PLAY  
PANEL X1

## INSTALLATION



Where there is an aluminum pole, the plinth must be created directly on it.



If there is already an adequate fund in CLS the game can be supplied with special brackets for fixing to the ground (option applicable only with confirmation of feasibility).

Make a proper security surface according to CFH. Periodic maintenance is mandatory, following manual supplied to customer.

| MATERIAL (mm)                         | DESCRIPTION (mm)    | MINIMUM DEPTH (mm) (b) | CRITICAL FALL HEIGHT (mm)                |
|---------------------------------------|---------------------|------------------------|--|
| LAWN/SOIL                             |                     |                        | 1000 (d)                                 |
| BARK                                  | 20 TO 80 GRAIN SIZE | 200<br>300             | 2000<br>3000                             |
| WOOD CHIPS                            | 20 TO 80 GRAIN SIZE | 200<br>300             | 2000<br>3000                             |
| SAND                                  | 20 TO 80 GRAIN SIZE | 200<br>300             | 2000<br>3000                             |
| GRAVEL                                | 20 TO 80 GRAIN SIZE | 200<br>300             | 2000<br>3000                             |
| RUBBER SURFACING<br>RESPONDENT TO HIC | THICKNESS 30 MM     |                        | DEPENDENT ON CERTIFICATION TESTS<br>1000 |
|                                       | THICKNESS 40 MM     |                        | 1300                                     |
|                                       | THICKNESS 45 MM     |                        | 1500                                     |
|                                       | THICKNESS 60 MM     |                        | 2000                                     |
|                                       | THICKNESS 70 MM     |                        | 2500                                     |
|                                       | THICKNESS 90 MM     |                        | 3000                                     |